



## Geotechnical education

Are you a geotechnical professional or someone working in the geotechnical space? We're working with Engineering New Zealand and the New Zealand Geotechnical Society to bring you up-to-date earthquake geotechnical engineering resources.

## Educational resources and events

Use these geotechnical resources and events to build your knowledge.



### Why we're creating geotechnical resources and events

#### ARTICLE

To build it right we need to understand and design for the ground our buildings stand on. We are therefore producing educational resources and events to share understanding of the latest geotechnical learnings and guidelines among geotechnical engineers and those they work with in the building sector.

(<https://www.building.govt.nz/building-code-compliance/geotechnical-education/why-we-are-creating-a-geotechnical-resource/>)



### Learn about Module 1

#### ARTICLE

This guideline is an overview of the earthquake geotechnical engineering practice series. It includes technical detail about estimating ground motion parameters.

(<https://www.building.govt.nz/building-code-compliance/geotechnical-education/learn-about-module-1/>)

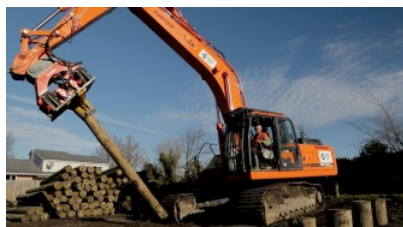
(<https://www.building.govt.nz/building-code-compliance/geotechnical-education/learn-about-module-3/>)



### Learn about Module 3

#### ARTICLE

This guideline is about liquefaction hazards and their effect, including lateral spreading. It describes sources of liquefaction-induced ground deformation and outlines procedures for assessing ground deformation.



### Learn about Module 5A

#### ARTICLE

This guideline provides a specification for designing and constructing ground improvement. It focuses on ground improvement to mitigate liquefaction effects on single-storey residential properties.

(<https://www.building.govt.nz/building-code-compliance/geotechnical-education/module-5a/>)



### Learn about rockfall

#### ARTICLE

Designing passive rockfall protection structures that act to reduce the effects of falling rock on people or structures.

(<https://www.building.govt.nz/building-code-compliance/geotechnical-education/learn-about-rockfall/>)



### Practice Advisory 17: Well-planned ground investigations can save costs

#### GUIDANCE

Why a well-devised, specific site geotechnical investigation is a key requirement for good building performance.

(<https://www.building.govt.nz/building-code-compliance/b-stability/b1-structure/practice-advisory-17/>)

### Events calendar

#### WEBSITE

The events calendar on the New Zealand Geotechnical Society website provides information on upcoming events and learning opportunities for geotechnical practitioners.



## Most recent updates

[Geotechnical guidance \(https://www.building.govt.nz/building-code-compliance/b-stability/b1-structure/geotechnical-guidance/\)](https://www.building.govt.nz/building-code-compliance/b-stability/b1-structure/geotechnical-guidance/) has the latest geotechnical engineering guides.



**MINISTRY OF BUSINESS,  
INNOVATION & EMPLOYMENT**  
HĪKINA WHAKATUTUKI

New Zealand Government