

## What happens next?

If you find damage or have done repair work that you believe may change the colour of the placard, contact your local council to request a reassessment.

### YOU CANNOT REMOVE OR CHANGE A PLACARD YOURSELF.

A placard cannot be removed once issued. It can only be changed to a different colour or removed once a reassessment has been conducted following repair or remediation work. To get a placard changed or removed, you should contact your local council and insurer or landlord (if you're a tenant).

## Where can I find more information?

Find information about rapid building assessments happening in your area on your local council website.

If you have questions, contact your local council or go to: [www.building.govt.nz/managing-buildings/managing-buildings-in-an-emergency](http://www.building.govt.nz/managing-buildings/managing-buildings-in-an-emergency)

If you are the tenant or landlord of a rental property [www.tenancy.govt.nz](http://www.tenancy.govt.nz) has information on your rights and obligations after a natural disaster.

## BUILDING PERFORMANCE

# Information for homeowners and occupiers

## WHAT SHOULD YOU DO AFTER AN EMERGENCY?



## What is a rapid building assessment?

Rapid building assessments may happen after an emergency event. They help make sure that you, your family, and the community are safe.




A rapid building assessment is a quick visual check for damage and existing or potential hazards. How quickly assessments can happen will depend on the size and scale of the event.

If your home is undamaged, but at risk of being damaged by neighbouring buildings or natural hazards, it will be assessed based on that risk. Findings will be recorded on a paper or digital form and a placard usually issued.

After an assessment, your home may be given one of three different coloured placards to let you know what the next step is. Placards are generally placed on the building, and you will be given information about what it means.

Not every home in an affected area may get an assessment. A homeowner can request one by contacting their local council

## What do the different placards mean?

	<p>You can occupy/use your building.</p> <p>It does not mean that there is no damage.</p>
	<p>Entry to your home is restricted and parts of it cannot be used or you can only enter the building on a short-term basis, with supervision. Details of any restrictions will be on your placard.</p>
	<p>A red placard means you must not enter the building. There may be a serious risk to public safety, health, and wellbeing.</p> <p>The risk could be from the building itself, adjacent buildings or from land instability.</p>

If a placard has been placed on your home, it is important that you comply with the details on the placard.

Note: Sometimes placards are referred to as stickers, signs or notices.

For more information on rapid building assessment and placards go to: [www.building.govt.nz/rapid-building-assessment-placarding-system](http://www.building.govt.nz/rapid-building-assessment-placarding-system)

## Rapid Building Assessors (RBAs)



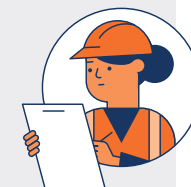
### Who are we?

- › We are organised and put into teams by the local council as part of the response to the emergency event.
- › We are qualified building officials that have had specific training completing assessments to make sure buildings and homes are safe for your family, and the community.
- › We inspect buildings to identify damage and risk that may impact the life, safety, or health of the occupants.

We will carry identification. If you are unsure, you can contact the local council to check us out.

### What can we do to help?

- › We can inspect the exterior and sometimes the interior of a home or land
- › We can direct evacuation if necessary to prevent death or injury, or place one or more placards on or near a home prohibiting or restricting its use
- › We can put in place measures necessary to keep people at a safe distance from a home or to protect a home from being damaged
- › We can direct the owner to more information about what a placard means for their building or land.



RBAs are not linked to insurance companies or able to help you plan your next steps.