



CODEMARK™

CERTIFICATE NO: CM20214

# PRODUCT CERTIFICATE



## Jiangsu Bosen Aluminium Doors and Windows

Date of issue: 6/08/2021

Renewal Date: 5/08/2024

### KEY INFORMATION

#### 1 CERTIFICATE HOLDER DETAILS

**Jiangsu Bosen Doors and Windows Technology Co., Ltd.**

No. 66, Chengxi Avenue, Jingjiang, Jiangsu, China

[bosenca@bosendw.com](mailto:bosenca@bosendw.com)

+86 18082350185

#### **New Zealand Distributor Details**

Sky Window Construction Ltd

28 Sydney St Petone Wellington, New Zealand

[tony@skywindows.co.nz](mailto:tony@skywindows.co.nz)

[www.skywindows.nz](http://www.skywindows.nz)

Mob: +64 211864256



#### 2 PRODUCT CERTIFICATION BODY



**SAI Global Certification Services Pty Limited**

(ACN 108 716 669) Trading as "SAI Global"

JAS-ANZ Accreditation No. Z1440295AS

680 George St, Sydney, NSW 2000

[www.saiglobal.com](http://www.saiglobal.com)

#### 3 SUMMARY OF DESCRIPTION OF BUILDING METHOD OR PRODUCT

Jiangsu Bosen Aluminium Doors & Windows are a range of double-glazed windows and doors made up of Aluminium alloy joinery and providing thermal break. Products are an Aluminium Awning window, Aluminium Folding Door and Aluminium Sliding Door.

*Continuation of description can be found in item 9. Supporting Information about Description of Building Product or Method.*

*Matters that should be taken into account in the use or application of the building method or product can be found in item 6. Conditions and Limitations of Use.*

Catalogue or model identification numbers: Refer to item 9 for detailed identification information.

#### 4 SUMMARY OF INTENDED USE OF BUILDING METHOD OR PRODUCT

Aluminium doors and windows for external use in all buildings of classified uses (under Clause A1 of the NZBC).

*Continuation of intended use can be found in item 10. Supporting Information about Intended use of Building Product or Method.*

#### 5 BUILDING CODE PROVISIONS – New Zealand Building Code (NZBC)

**B1 Structure** – B1.3.1; B1.3.2; B1.3.3 (a, h, & j) (self-weight, wind, impact); B1.3.4

**B2 Durability** – B2.3.1 (b); B2.3.1(c) (for hardware)

**E2 External Moisture** – E2.3.2 (contributes to); E2.3.7

**F2 Hazardous Building Materials** – F2.3.1; F2.3.2; F2.3.3 (a) or (b)

**G4 Ventilation** – G4.3.1 (contributes to)

**G7 Natural Light** – G7.3.1 (contributes to); G7.3.2 (contributes to)

**H1 Energy Efficiency** – H1.3.1 (contributes to); H1.3.2E (contributes to)

*If designed, used, installed & maintained in accordance with the scope of this Certificate, the above-mentioned product will meet the following provisions of the NZBC.*

*How the building method or product complies or contributes can be found in item 12. Basis for Certification.*

*Any qualifications on the extent of that compliance can be found in item 6. Conditions and limitations of use.*

JAS-ANZ



The certificate holder must maintain compliance with the conditions set out in section 15 of the Building (Product Certification) Regulations 2008.

This certificate is issued by SAI Global, an independent certification body accredited by the product certification accreditation body appointed by the Chief Executive of Ministry Business, Innovation and Employment (MBIE) under the Building Act 2004. MBIE does not in any way warrant, guarantee or represent that the building method or product, the subject of this certificate conforms with the New Zealand Building Code, nor accept any liability arising out of the use of the building method or product. MBIE disclaims to the extent permitted by law, all liability (including negligence) for claims of losses, expenses, damages, and costs arising as a result of the use of the building method(s) or product(s) referred to in this certificate.

This certificate may only be reproduced in its entirety. It is advised to check that this certificate is currently valid and not withdrawn or suspended by referring to the Register of Product Certificates on the Building Performance website <http://www.building.govt.nz>.

Information regarding SAI Global's complaints process can be found at the following link: [Complaints Process](#).

CERTIFICATE V1.2

### 6 CONDITIONS AND LIMITATIONS OF USE

- a) Product is to be installed in accordance with Jiangsu Bosen Doors and Windows Technology CO., LTD – Guide to Window Installation, Ver. 4 dated 12 March 2021 and to manufacturers guidelines particularly details of the penetrations into the cladding.
- b) Glass selection and glazing in locations subject to human impact must be in accordance with NZS 4223.3:2016.
- c) Where transparent glazing can be mistaken for a doorway or an unimpeded path of travel in all buildings of classified uses (excluding Housing), the presence of glazing shall be made apparent either by the provision of an opaque band across the full width of the glazed opening or by a motif or other decorative treatment in accordance with Clause 2.2 of NZS 4223.3 2016.
- d) The air infiltration rating and the highest allowable wind zones for each model when installed in a building that is designed in accordance with NZS 3604 and/or NZS 4229 and with an importance level not greater than two and up to 10m in height (as defined in NZS 3604:2011) is:
  - 6063-T5 - Heat Insulation of 70 Series (Aluminium Awning Window) – Air infiltration rating: Air conditioned. The highest allowable wind zone is up to and including Extra High.
  - 6063-T5 - Heat Insulation of 75 Series (Aluminium Folding Door) – Air infiltration rating: Non air conditioned. The highest allowable wind zone is up to and including Medium.
  - 6063-T5 - Heat Insulation of 120 Series (Aluminium Sliding Door) – Air infiltration rating: Non air conditioned. The highest allowable wind zone is Low.
- e) This product is not certified to be used where there are fire rating requirements.

NOTE: Together, items 3, 4, 5 and 6 define scope of use.

#### Reference Documents:

- Jiangsu Bosen Doors and Windows Technology CO., LTD – Guide to Window Installation, Ver. 4 dated 12 March 2021.

### 7 HEALTH AND SAFETY INFORMATION

- Contact certificate holder or distributor to obtain information about material safety and handling.

### 8 SIGNATURES

Name and Signature of the Product Certification Body's (PCB) authorised representative and, where different, the person assigned by the PCB to make the certification decision



**Frank Camasta**  
Global Head of Technical Services  
SAI Global Assurance

### 9 SUPPORTING INFORMATION ABOUT DESCRIPTION

Jiangsu Bosen Aluminium Doors & Windows are a range of double-glazed windows and doors made up of Aluminium alloy joinery and providing thermal break. Products are an Aluminium Awning window, Aluminium Folding Door and Aluminium Sliding Door.

This certification covers only the following models:

- a. 6063-T5 - Heat Insulation of 70 Series (Aluminium Awning Window)
- b. 6063-T5 - Heat Insulation of 75 Series (Aluminium Folding Door)
- c. 6063-T5 - Heat Insulation of 120 Series (Aluminium Sliding Door)

Dimensional details of certified models are as follows:

- 6063-T5 - Heat Insulation of 70 Series (Aluminium Awning Window)  
Dimension: 1800mm (H) x 2200mm (W)  
Operable Sash: 1716mm (H) x 839mm (W)
- 6063-T5 - Heat Insulation of 75 Series (Aluminium Folding Door)  
Dimension: 2223mm (H) x 2608mm (W)  
Door Leaf/Panel Size: 2068mm (H) x 812.5mm (W)
- 6063-T5 - Heat Insulation of 120 Series (Aluminium Sliding Door)  
Dimension: 2250mm (H) x 2300mm (W)  
Sliding Door Leaf: 2148mm (H) x 1136mm (W)  
Awning sash: 940mm (H) x 1050mm (W)

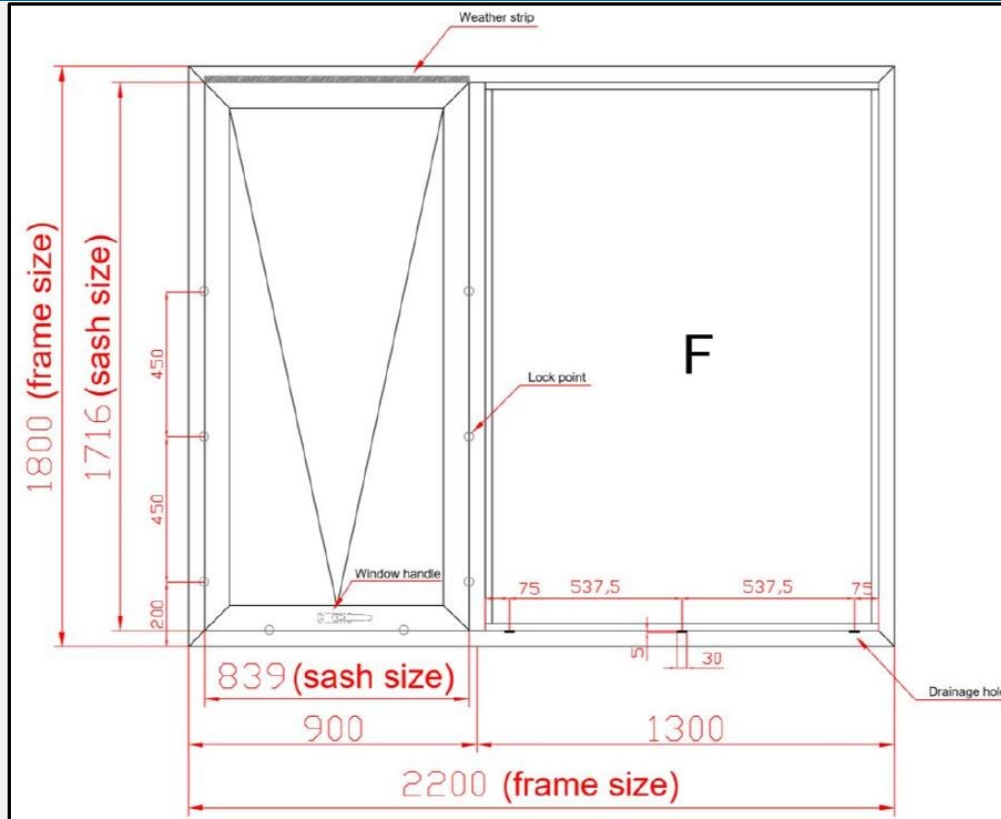


CODEMARK™

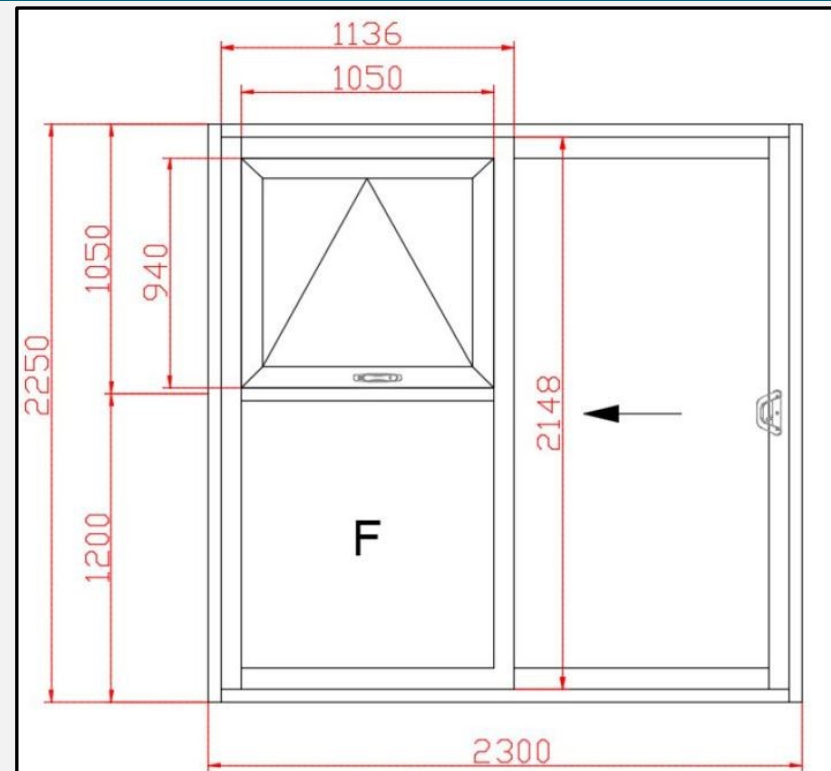
# PRODUCT CERTIFICATE



## Jiangsu Bosen Aluminium Doors and Windows



Heat Insulation Of 70 Series



Heat Insulation Of 120 Series



The certificate holder must maintain compliance with the conditions set out in section 15 of the Building (Product Certification) Regulations 2008.

This certificate is issued by SAI Global, an independent certification body accredited by the product certification accreditation body appointed by the Chief Executive of Ministry Business, Innovation and Employment (MBIE) under the Building Act 2004. MBIE does not in any way warrant, guarantee or represent that the building method or product, the subject of this certificate conforms with the New Zealand Building Code, nor accept any liability arising out of the use of the building method or product. MBIE disclaims to the extent permitted by law, all liability (including negligence) for claims of losses, expenses, damages, and costs arising as a result of the use of the building method(s) or product(s) referred to in this certificate.

This certificate may only be reproduced in its entirety. It is advised to check that this certificate is currently valid and not withdrawn or suspended by referring to the Register of Product Certificates on the Building Performance website <http://www.building.govt.nz>.

Information regarding SAI Global's complaints process can be found at the following link: [Complaints Process](#).

CERTIFICATE V1.2

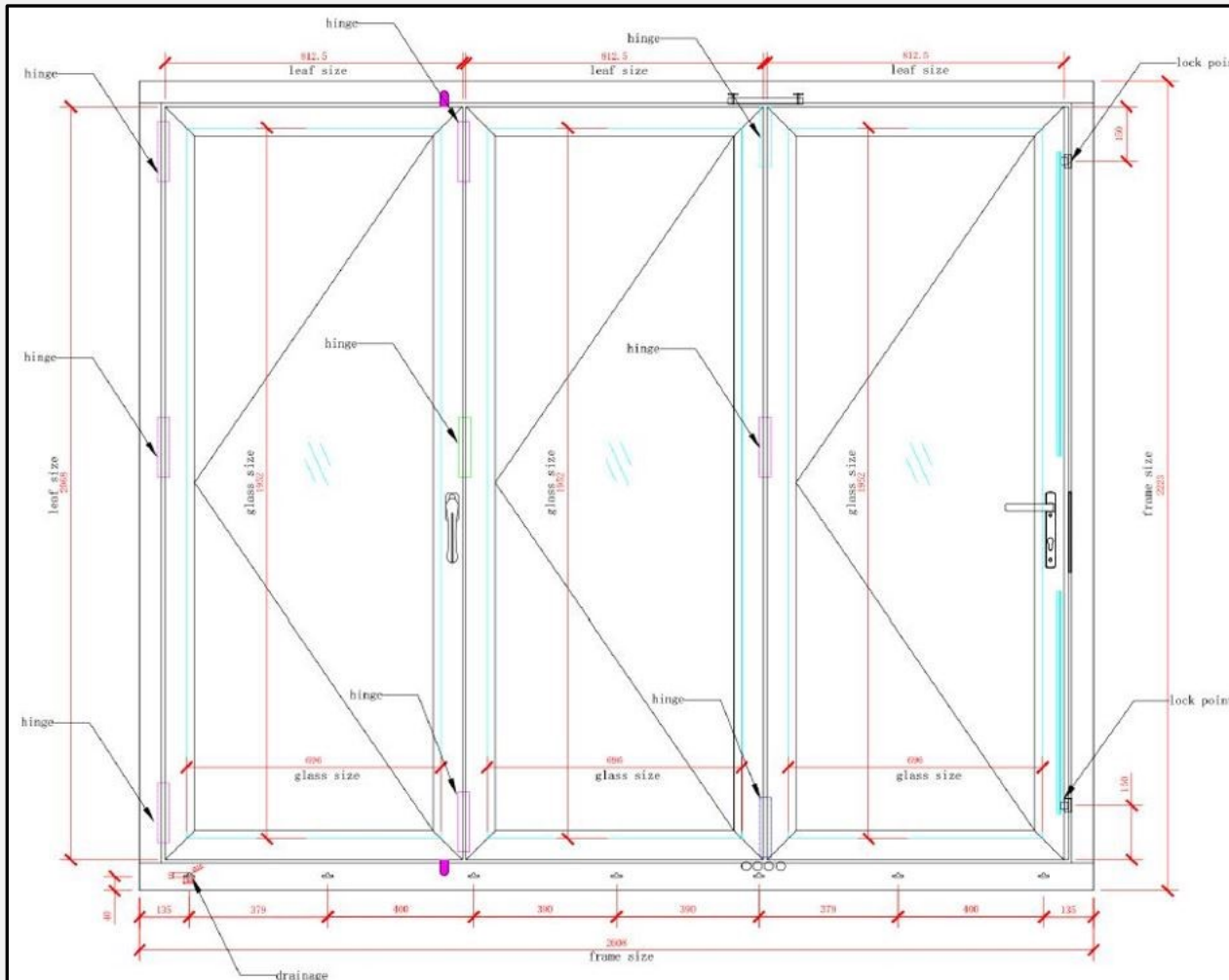


CODEMARK™

# PRODUCT CERTIFICATE



## Jiangsu Bosen Aluminium Doors and Windows



Heat Insulation Of 75 Series



The certificate holder must maintain compliance with the conditions set out in section 15 of the Building (Product Certification) Regulations 2008.

This certificate is issued by SAI Global, an independent certification body accredited by the product certification accreditation body appointed by the Chief Executive of Ministry Business, Innovation and Employment (MBIE) under the Building Act 2004. MBIE does not in any way warrant, guarantee or represent that the building method or product, the subject of this certificate conforms with the New Zealand Building Code, nor accept any liability arising out of the use of the building method or product. MBIE disclaims to the extent permitted by law, all liability (including negligence) for claims of losses, expenses, damages, and costs arising as a result of the use of the building method(s) or product(s) referred to in this certificate.

This certificate may only be reproduced in its entirety. It is advised to check that this certificate is currently valid and not withdrawn or suspended by referring to the Register of Product Certificates on the Building Performance website <http://www.building.govt.nz>.

Information regarding SAI Global's complaints process can be found at the following link: [Complaints Process](#).

CERTIFICATE V1.2



CODEMARK™

# PRODUCT CERTIFICATE



## Jiangsu Bosen Aluminium Doors and Windows

### 10 SUPPORTING INFORMATION ABOUT INTENDED USE

All supporting information about intended use are as stated above in item 4. **SUMMARY OF INTENDED USE OF BUILDING METHOD OR PRODUCT.**

### 11 SUPPORTING INFORMATION ABOUT CONDITIONS AND LIMITATIONS OF USE

All conditions and limitations are as stated above in item 6. **Conditions and Limitations of Use.**

### 12 BASIS FOR CERTIFICATION

1. **B1 Structure** – by testing and comparison with provisions of Verification Method B1/VM1.
2. **B2 Durability** – by comparison with provisions of Verification Method B2/VM1.
3. **E2 External Moisture** – by testing and comparison with Acceptable Solution E2/AS1 and referenced standard NZS 4211:2008 Specification for Performance of Windows.
4. **F2 Hazardous building materials** – by comparison with provisions of Verification Method F2/VM1 and Acceptable Solution F2/AS1.
5. **G4 Ventilation** – by comparison with product specifications and acceptable solution G4/AS1.
6. **G7 Natural Light** – by comparison with product specifications and acceptable solution G7/AS1.
7. **H1 Energy Efficiency** – by testing and comparison with acceptable solution H1/AS1.

### 13 SUPPORTING DOCUMENTATION FOR CERTIFICATION

- **Building regulations 1992 (SR 1992/150) – Reprinted as at 1 January 2017.**
  - **Acceptable Solutions and Verification Methods for New Zealand Building Code:**
    - a) **Clause B1 Structure** – B1/VM1, Amendment 19 (28 November 2019).
    - b) **Clause B2 Durability** – B2/VM1, Amendment 12 (28 November 2019).
    - c) **Clause E2 External Moisture** – E2/AS1, Amendment 10 (5 November 2020).
    - d) **Clause H1 Energy Efficiency** – H1/AS1, Amendment 4 (28 November 2019).
    - e) **Clause F2 Hazardous building materials** – F2/VM1 and F2/AS1, Amendment 3 (1 January 2017).
    - f) **G4 Ventilation** – G4/AS1, 4<sup>th</sup> Edition, unamended (27 June 2019).
    - g) **G7 Natural Light** – G7/AS1, 1<sup>st</sup> Edition, Amendment 2 (14 February 2014).
1. **Intertek, Jiangsu Bosen Doors and Windows Technology Co. Ltd. (Aluminium Awning Window - Heat Insulation Of 70 Series) Test Report No. 200426006SHF-002-R2 (dated 04 November 2020).**  
*The results demonstrated in this report are compliant with the applicable requirements of NZS 4211:2008 (Amdt 1-2014).*
  2. **Intertek, Jiangsu Bosen Doors and Windows Technology Co. Ltd. (Aluminium Folding Door - Heat Insulation Of 75 Series) Test Report No. 200426006SHF-006-R4 (dated 04 November 2020).**  
*The results demonstrated in this report are compliant with the applicable requirements of NZS 4211:2008 (Amdt 1-2014).*
  3. **Intertek, Jiangsu Bosen Doors and Windows Technology Co. Ltd. (Aluminium Sliding Door - Heat Insulation Of 120 Series) Test Report No. 200426006SHF-004-R3 (dated 04 November 2020).**  
*The results demonstrated in this report are compliant with the applicable requirements of NZS 4211:2008 (Amdt 1-2014).*



The certificate holder must maintain compliance with the conditions set out in section 15 of the Building (Product Certification) Regulations 2008.

This certificate is issued by SAI Global, an independent certification body accredited by the product certification accreditation body appointed by the Chief Executive of Ministry Business, Innovation and Employment (MBIE) under the Building Act 2004. MBIE does not in any way warrant, guarantee or represent that the building method or product, the subject of this certificate conforms with the New Zealand Building Code, nor accept any liability arising out of the use of the building method or product. MBIE disclaims to the extent permitted by law, all liability (including negligence) for claims of losses, expenses, damages, and costs arising as a result of the use of the building method(s) or product(s) referred to in this certificate.

This certificate may only be reproduced in its entirety. It is advised to check that this certificate is currently valid and not withdrawn or suspended by referring to the Register of Product Certificates on the Building Performance website <http://www.building.govt.nz>.

Information regarding SAI Global's complaints process can be found at the following link: [Complaints Process](#).

CERTIFICATE V1.2





CODEMARK™

# PRODUCT CERTIFICATE



## Jiangsu Bosen Aluminium Doors and Windows

4. **Jiangsu Bosen Doors and Windows Technology Co. Ltd, Durability Declaration (dated 14 May 2021).**  
*This declaration confirms that Jiangsu Bosen Windows & Doors are designed to be durable for more than 15 years for aluminium windows and doors and 5 years for hardware, based on extended use for over 30 years in New Zealand.*
5. **Jiangsu Bosen Doors and Windows Technology Co. Ltd, Declaration of Conformity (dated 24 May 2021).**  
*This declaration confirms that the product complies with the requirements for Hazardous Building Materials by way of design and materials.*
6. **SAI Global, StandardsMark Licence for Jiangsu Jiacheng Special Manufacturing Glass Co., Ltd, Licence SMK40498 (dated 3 February 2020).**  
*This certificate provides evidence that glass products listed in licence SMK40498 comply with AS/NZS 2208:1996 – Safety glazing materials in buildings.*
7. **SAI Global, StandardsMark Licence for Jiangsu Jiacheng Special Manufacturing Glass Co., Ltd, Licence SMK40497 (dated 16 May 2019).**  
*This certificate provides evidence that glass products listed in licence SMK40497 comply with AS/NZS 4666:2012 – Insulating glass units.*
8. **SAI Global, StandardsMark Licence for Shanghai SYP Building Glass Co., Ltd, Licence SMK1636 (dated 15 December 2016).**  
*This certificate provides evidence that glass products listed in licence SMK1636 comply with AS/NZS 2208:1996 – Safety glazing materials in buildings.*
9. **SAI Global, StandardsMark Licence for Shanghai SYP Engineering Glass Co., Ltd, Licence SMK40521 (dated 23 December 2020).**  
*This certificate provides evidence that glass products listed in licence SMK40521 comply with AS/NZS 4666:2012 – Insulating glass units.*

### 14 CONDITIONS RELATING TO NOTIFICATION

- (a) the certificate holder notifies the product certification body in writing of any intended change to any of the following particulars:
  - (i) the name, address, or contact details of the certificate holder:
  - (ii) any address of a location where a certified product is produced or manufactured:
- (b) the certificate holder notifies the product certification body in writing of any intended change, modification, or alteration to any of the following:
  - (i) the certified building method or product:
  - (ii) the method of its production or manufacture:
  - (iii) the product quality plan prepared in respect of the certified building method or product:
  - (iv) the application or installation instructions for the certified building method or product:
  - (v) any documentation relating to the use and maintenance of the certified building method or product:
- (c) if the certificate holder has any reason to suspect that the certified building method or product does not comply with the Building Code, the certificate holder notifies the product certification body in writing of the reason for that suspicion:
- (d) if the certificate holder or the product certification body finds that a certified building method or product that has been released on the market does not comply with the Building Code, the certificate holder discloses that fact in disclosure statements published in a form that is acceptable to the product certification body and to the chief executive:
- (e) if the certificate is suspended or revoked, the certificate holder—
  - (i) notifies all customers to whom the building method or product is regularly supplied; and
  - (ii) immediately ceases using the certificate, the mark of conformity, and any reference to the number of the certificate.



The certificate holder must maintain compliance with the conditions set out in section 15 of the Building (Product Certification) Regulations 2008.

This certificate is issued by SAI Global, an independent certification body accredited by the product certification accreditation body appointed by the Chief Executive of Ministry Business, Innovation and Employment (MBIE) under the Building Act 2004. MBIE does not in any way warrant, guarantee or represent that the building method or product, the subject of this certificate conforms with the New Zealand Building Code, nor accept any liability arising out of the use of the building method or product. MBIE disclaims to the extent permitted by law, all liability (including negligence) for claims of losses, expenses, damages, and costs arising as a result of the use of the building method(s) or product(s) referred to in this certificate.

This certificate may only be reproduced in its entirety. It is advised to check that this certificate is currently valid and not withdrawn or suspended by referring to the Register of Product Certificates on the Building Performance website <http://www.building.govt.nz>.

Information regarding SAI Global's complaints process can be found at the following link: [Complaints Process](#).

CERTIFICATE V1.2